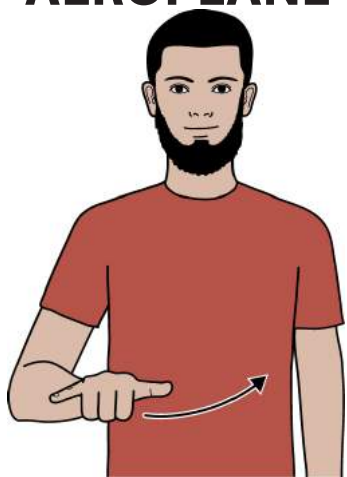
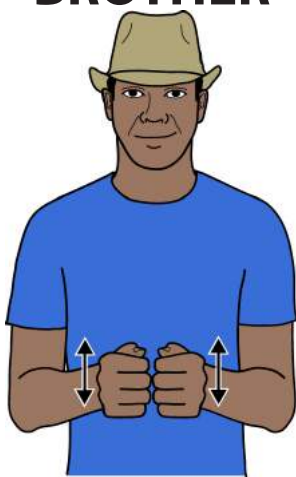


AEROPLANE



Working "Y" hand (palm down, pointing forward) moves across body and up slightly.

BROTHER



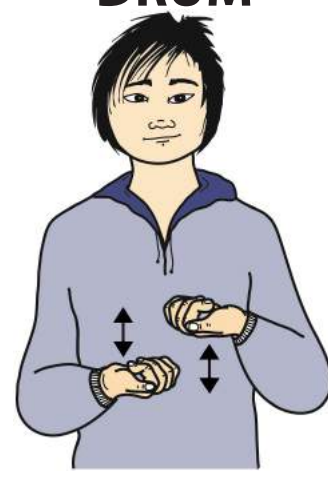
Closed hands (palms in, pointing forward) rub together at knuckles.

COT



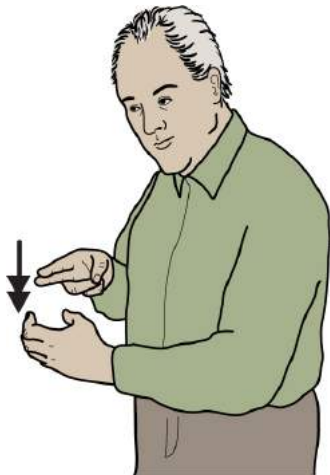
Flat hands (palms in, pointing forward) make short downward movement at supporting side; formation moves to working side and repeats movement.

DRUM



Closed hands (palms up, pointing forward/in) move up and down alternately.

EGG



Supporting full "C" hand (palm in, pointing forward); working "N" hand (palm in, pointing forward) mimes tapping top of egg twice.



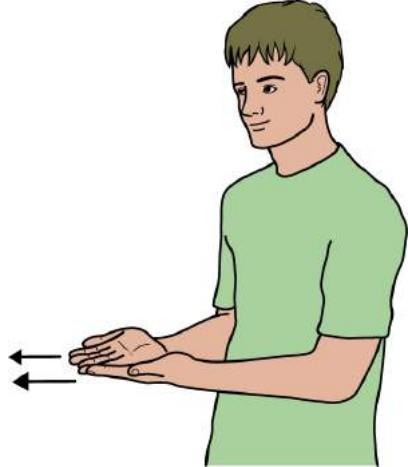
FEATHER



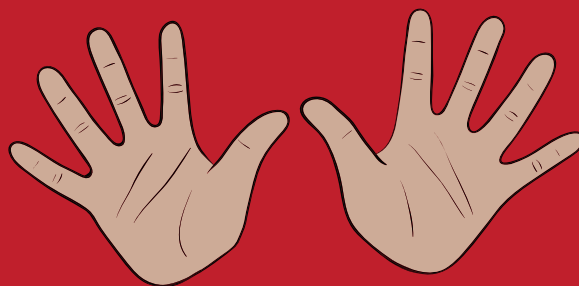
Supporting closed pinched hand (palm in, pointing forward) mimes holding base of feather; working open pinched hand moves up imaginary feather as finger and thumb close.

PLAY & EARLY LEARNING

GIVE

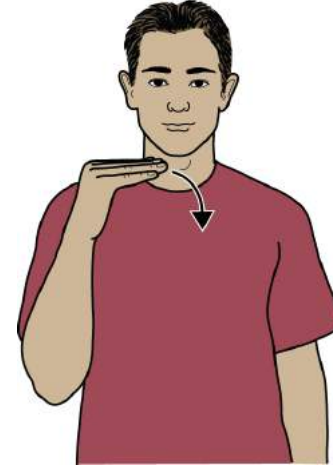


Flat hands (palms up, pointing forward) move towards receiver.
Directional sign.



© The SIGNALONG Group
www.signalong.org.uk

HOME



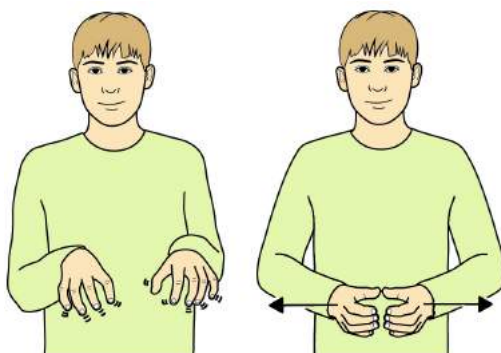
Working bent hand (palm in, pointing up) bends inwards from wrist while moving in a short way, finishing palm down, pointing in.

JELLYFISH



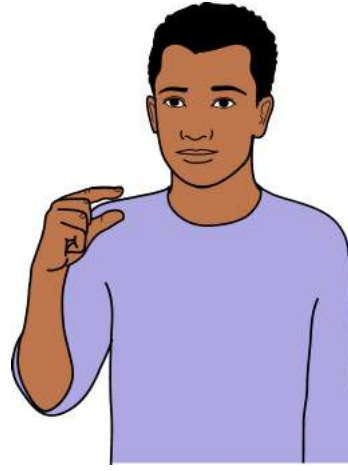
Supporting bunched hand (palm down, pointing forward); working hand (palm back/down, pointing forward/down) held loosely beneath, fingers dangle fluttering.

KEYBOARD



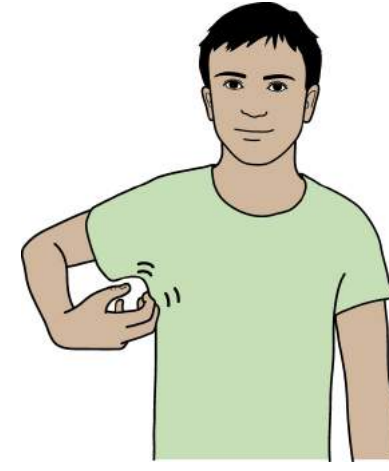
Clawed hands (palms down, pointing forward) mime typing; then full "C" hands move apart outlining shape of keyboard.

LITTLE



Working open pinched hand (palm in, pointing up) shows small size.

MONKEY



Working clawed hand scratches under working arm.