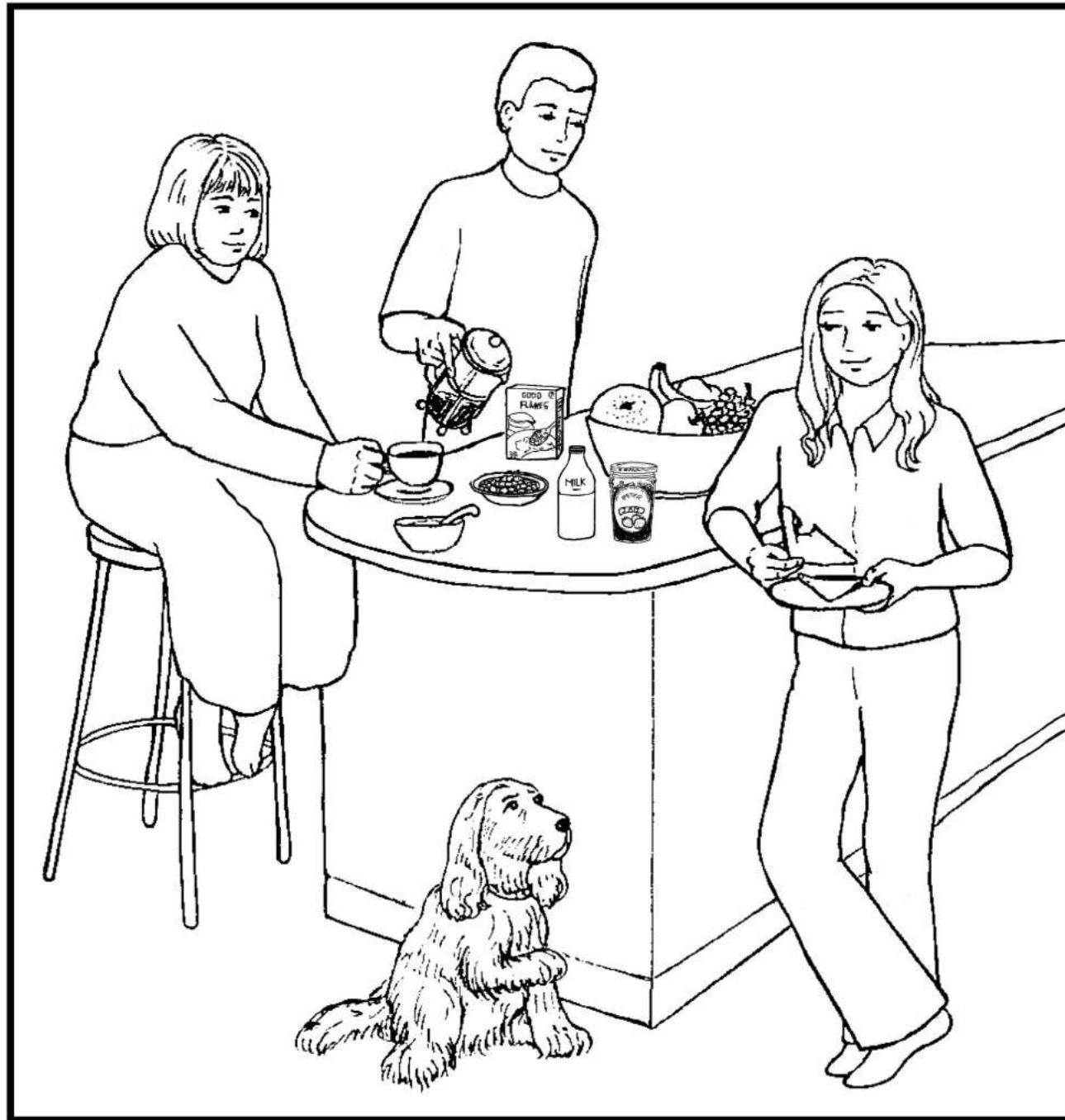


Social Awareness Resources

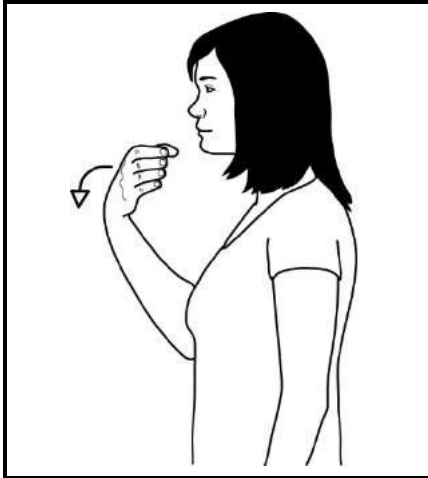
Discussion pictures are a useful way of setting sign vocabulary in context and providing a scaffold to elicit further vocabulary. We will be offering a series of pictures around the home and out and about to promote this. Each picture will have 12 signs to get you started and can also be coloured in.

Descriptions which are provided free of charge still remain the copyright of The Signalong Group and must reference handshape, orientation, placement and movement. Where these signs are distributed out of the parameters of which they were supplied, Signalong must be acknowledged.

At Breakfast



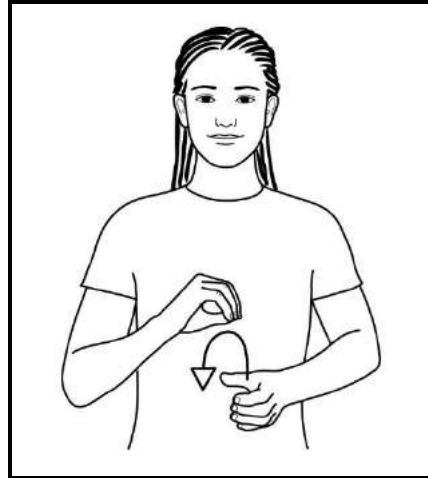
APPLE



Working full "C" hand (palm back, pointing in) in front of chin drops forwards/down to palm up.

Diagrams, text and descriptions © SIGNALONG

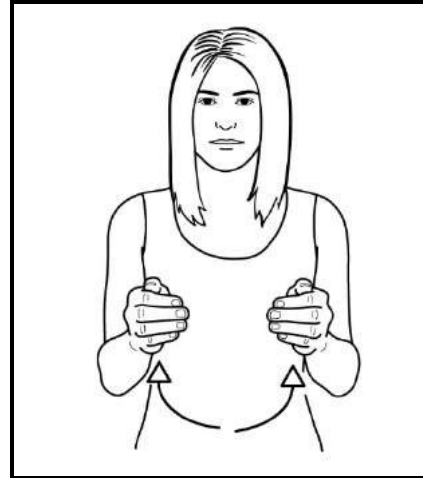
BANANA



Supporting full "C" hand (palm in, pointing forward) mimes holding a banana; working bunched hand mimes pulling down peel of banana.

Diagrams, text and descriptions © SIGNALONG

BOWL

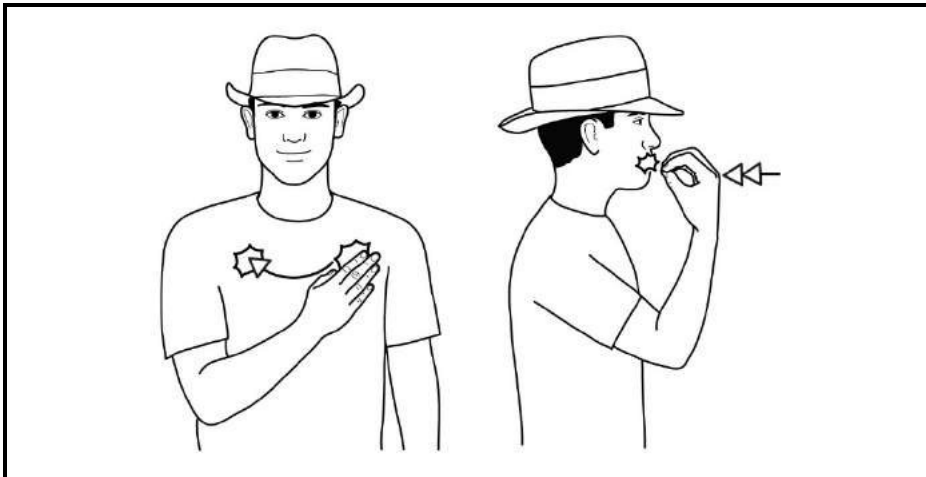


Cupped hands (palms up, pointing forward) move out and up to finish palms in.

Sign indicates size of bowl.

Diagrams, text and descriptions © SIGNALONG

BREAKFAST



Working flat hand (palm back, pointing in/up) taps across chest from supporting side to working side; then working bunched hand (palm back, pointing up) taps twice at side of mouth.

Diagrams, text and descriptions © SIGNALONG

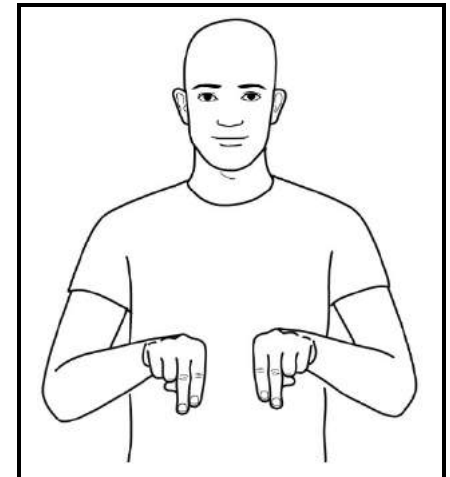
CUP



Working full "O" hand with little finger extended (palm in, pointing forward/up) moves up to lips as though drinking.

Diagrams, text and descriptions © SIGNALONG

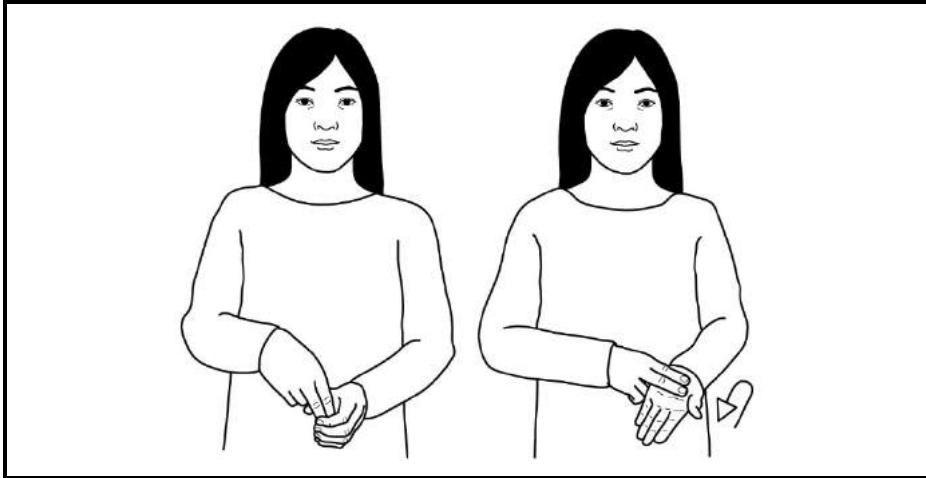
DOG



Bent "N" hands (palms down, pointing forward) are held in front of body.

Diagrams, text and descriptions © SIGNALONG

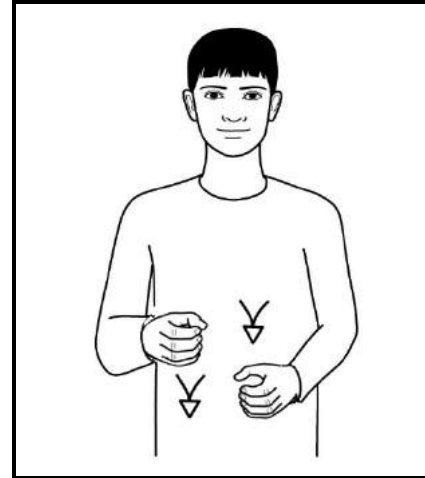
JAM



Diagrams, text and descriptions © SIGNALONG

Supporting full "C" hand (palm in, pointing forward); working "N" hand dips into "C" and moves from fingertips of supporting flat hand (palm up, pointing forward/in) to heel of hand turning to palm up moving to supporting fingertips.

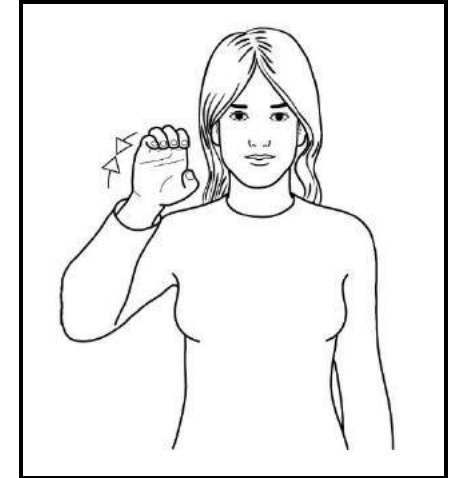
MILK



Diagrams, text and descriptions © SIGNALONG

Full "C" hands (palms in, pointing forward) move up and down alternately with gentle squeezing action.
The hands do not close.

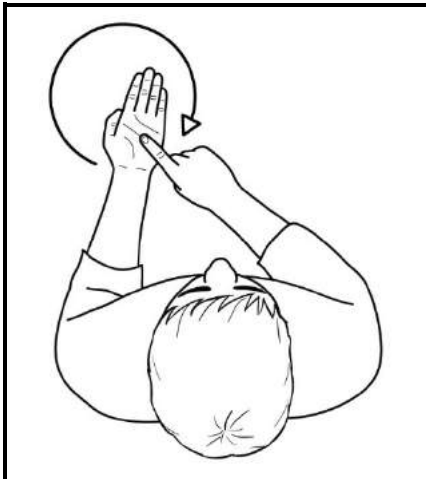
ORANGE



Diagrams, text and descriptions © SIGNALONG

Working full "C" hand (palm forward, pointing up) makes squeezing action by side of mouth.
Hand does not close into a fist.

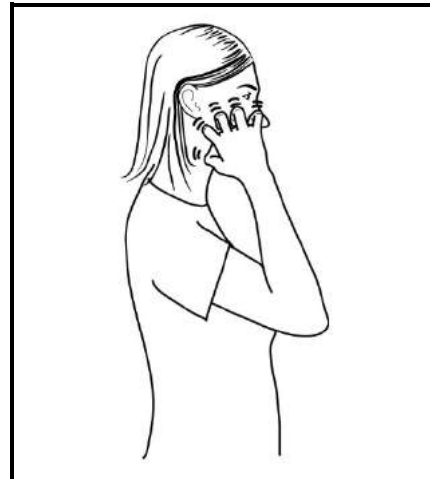
PLATE



Diagrams, text and descriptions © SIGNALONG

Working index makes outward circle to show size of plate over flat supporting palm.

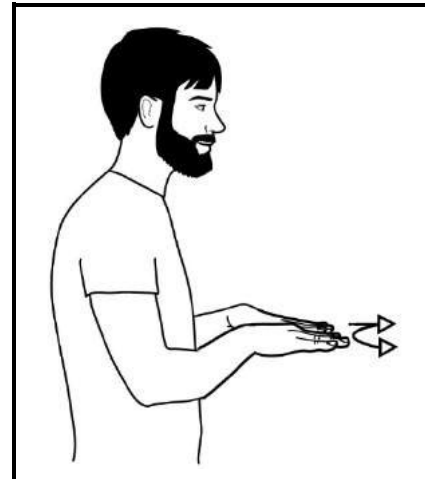
SUGAR



Diagrams, text and descriptions © SIGNALONG

Working clawed hand (palm in, pointing up) fingers flex as though scratching against cheek.

TOAST



Diagrams, text and descriptions © SIGNALONG

Flat hands (palms down, pointing forward) make small movement forwards and back; turn to palms up and move forwards again.